

Homelessness, Housing, Mental Health Task Force

—
January 25, 2023



Presentation:

City of Tulsa's Affordable Housing Strategy

Travis Hulse – Mayor's Office, Housing Policy Director



• Tulsa, Oklahoma

Affordable Housing Strategy



www.cityoftulsa.org

Mission: The City of Tulsa works collaboratively to create quality housing opportunities for all Tulsans that respect and honor the unique needs and characteristics of each neighborhood and its residents.

Access online at: <https://www.cityoftulsa.org/housing>

Affordable Housing Strategy - Sections

- Strengthening Neighborhoods
- Affordable Housing Preservation
- Affordable Housing Development
- Vacant and Abandoned Properties
- Evictions
- Homelessness

Affordable Housing Strategy - Progress

36 total actions identified

22% or 8 actions
Under Review



78% or 28 actions
Complete or Ongoing

Strengthening Neighborhoods

What is going well...

- Community Housing Development Organization academy to increase development capacity in neighborhoods throughout Tulsa.
- Creation of and investment in Community Development Financial Institution.



Visit: <https://tedcnet.com>

Strengthening Neighborhoods

Potential actions to implement...

- Collaborate with local service providers to establish agencies in targeted neighborhoods.
- Formal alignment with local school districts, Tulsa Housing Authority, Growing Together, and other community stakeholders for targeted neighborhood investment.

Affordable Housing Preservation

What is going well...

- Expand the Tulsa Health Department's Safe and Healthy Homes Program Initiative



Visit: <https://www.tulsa-health.org/housing>

Affordable Housing Preservation

Potential actions to implement...

- Collaborate with Tulsa County to intervene prior to Tulsa County Tax Delinquency auctions to connect properties to quality landlords or emergency repairs.

**Example: First Right of Refusal
Cheboygan, Michigan**

Affordable Housing Development

What is going well...

- Establishment and financing of Affordable Housing Trust Fund.



Visit: <https://partnertulsa.org>

Affordable Housing Development

Potential actions to implement...

- Collaborate with permitting, developers, and planning to implement pre-approved plans available to developers.

**Example: Pattern Zoning
Claremore, Oklahoma**

Vacant and Abandoned Properties

What is going well...

- Housing Opportunity Partnership program policies prioritizing rehab over demolition and preservation over new construction whenever feasible.



Visit: <https://www.cityoftulsa.org/winhousing>

Vacant and Abandoned Properties

Potential actions to implement...

- Creation of preferred developer property portal.

Example: Land Bank Rehab Program

Wyandotte County/Kansas City, Kansas

Evictions

What is going well...

- Implement the Abode Initiative
- Proactive outreach to vulnerable tenants.

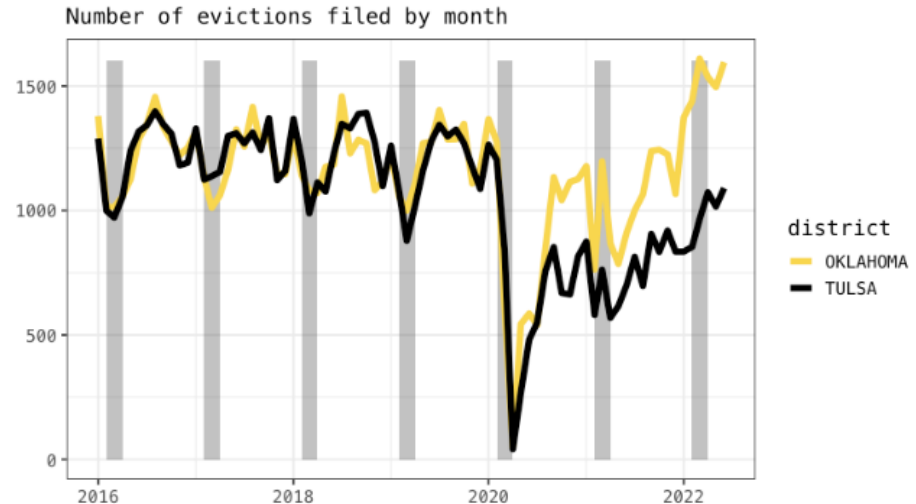


Visit: <https://tulsaltrc.org>

Evictions

Potential actions to implement...

- Implementation of preferred rentals database that tracks landlords with unpaid property taxes, foreclosure vulnerability, repeated code enforcement actions and excessive eviction filing.



Homelessness

- The City will work with A Way Home for Tulsa to implement its strategic plan to ensure homelessness in Tulsa is rare, brief, and nonrecurring.



Visit: <https://www.housingsolutionstulsa.org>

What has changed...

- Increase in interest rates
- Reduction in available units
- Increases in for-sale and rental prices
- Inflation
- Supply chain delays
- Labor shortages

Discussion



Presentation: AWH4T Strategic Plan

Becky Gligo - Housing Solutions, Executive Director
& CoC Lead Agency



A Way Home for Tulsa Strategic Plan 2020-2024

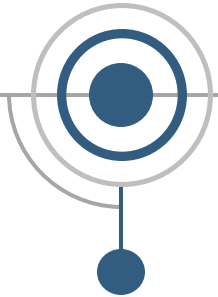
Making Homelessness Rare, Brief, and Non-Recurring



Coordinated by Housing Solutions

Timeline

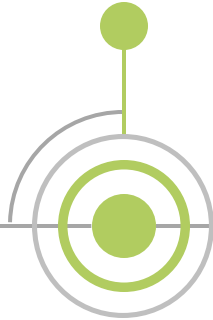
April 2018



AWH4T recognized need for robust strategic Plan

HomeBase selected as consultant

October 2018



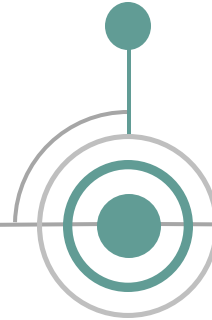
December 2018



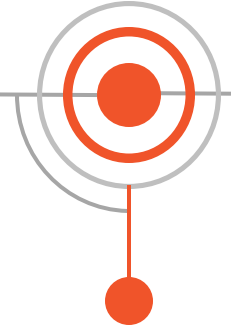
Cross-sector Advisory Council convened

Homebase begins needs assessment

January 2019



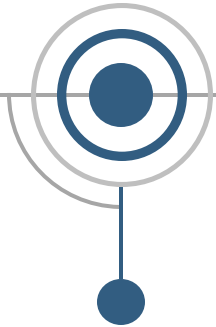
February 2019



300+ people attend kick-off event

Timeline

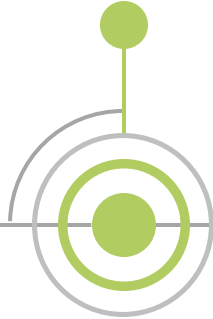
March 2019



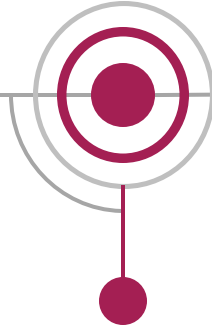
Committee work begins

HomeBase completes cost analysis

August 2019



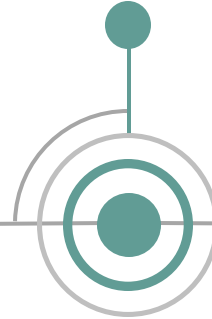
October 2019



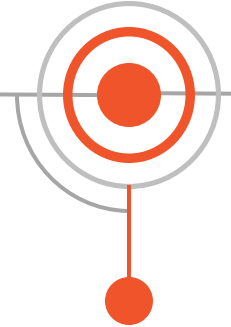
Stakeholders recognize need for new governance structure

Strategic Plan & governance structure approved by AWH4T

Jan/Feb 2020

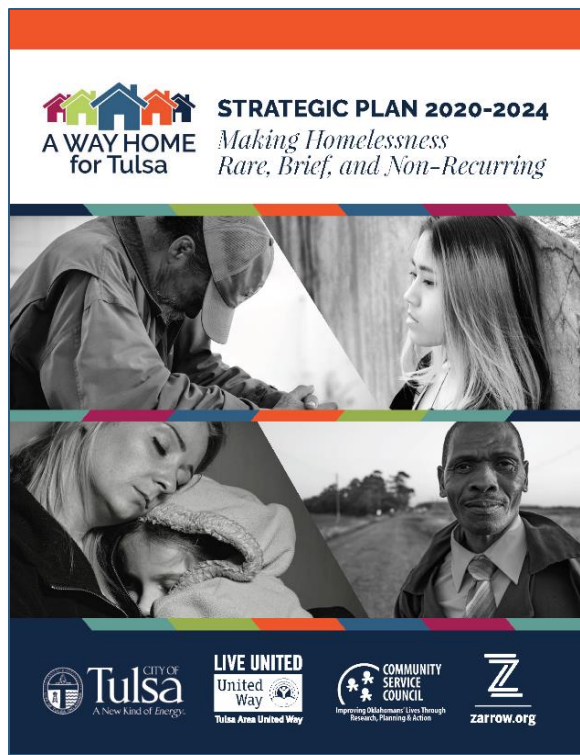


March 2020



Launch of new lead agency and new leadership structure

Strategic Plan



Stop

Stop Homelessness Before It Begins

Transform

Transform the Homeless System of Care to be More Effective, Equitable, and Person Centered

Increase Access

Increase Access to Housing

Partner

Partner Across Tulsa to Build Solutions and Access Resources



Goal One: Stop Homelessness Before It Begins

- Reduce unnecessary evictions and support those who are, or might be, evicted.
- Improve discharge policies and supports to reduce the number of individuals that exit institutions and systems of care and end up in homelessness.



Goal Two:

Transform the homeless system of care to be more effective, equitable, and person-centered

- Understand the need, allocate resources and support implementation at the system level
- Provide services to reduce barriers to housing



Coordinated by Housing Solutions

Goal Three: Increase Access to Housing

- Revise policies to prioritize affordable housing.
- Connect tenants to units.



Goal Four: Partner Across Tulsa to Build Solutions and Access Resources

- Increase community support
- Increase state and federal support



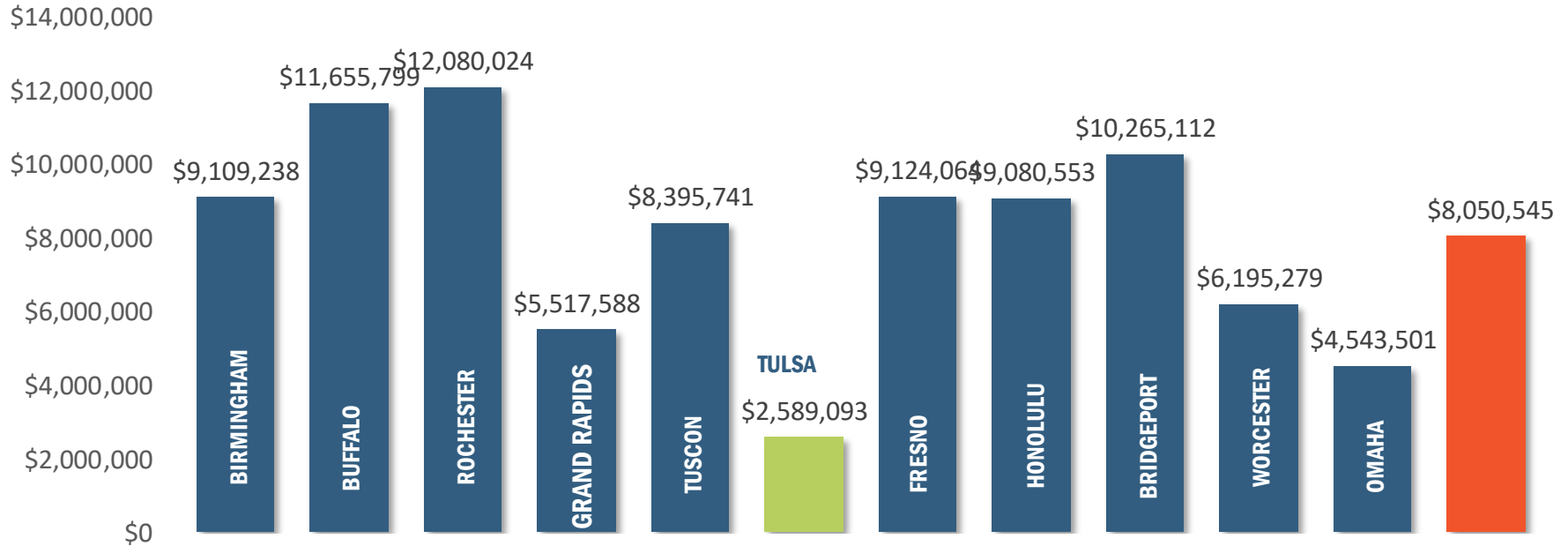
Coordinated by Housing Solutions

Tracking Success

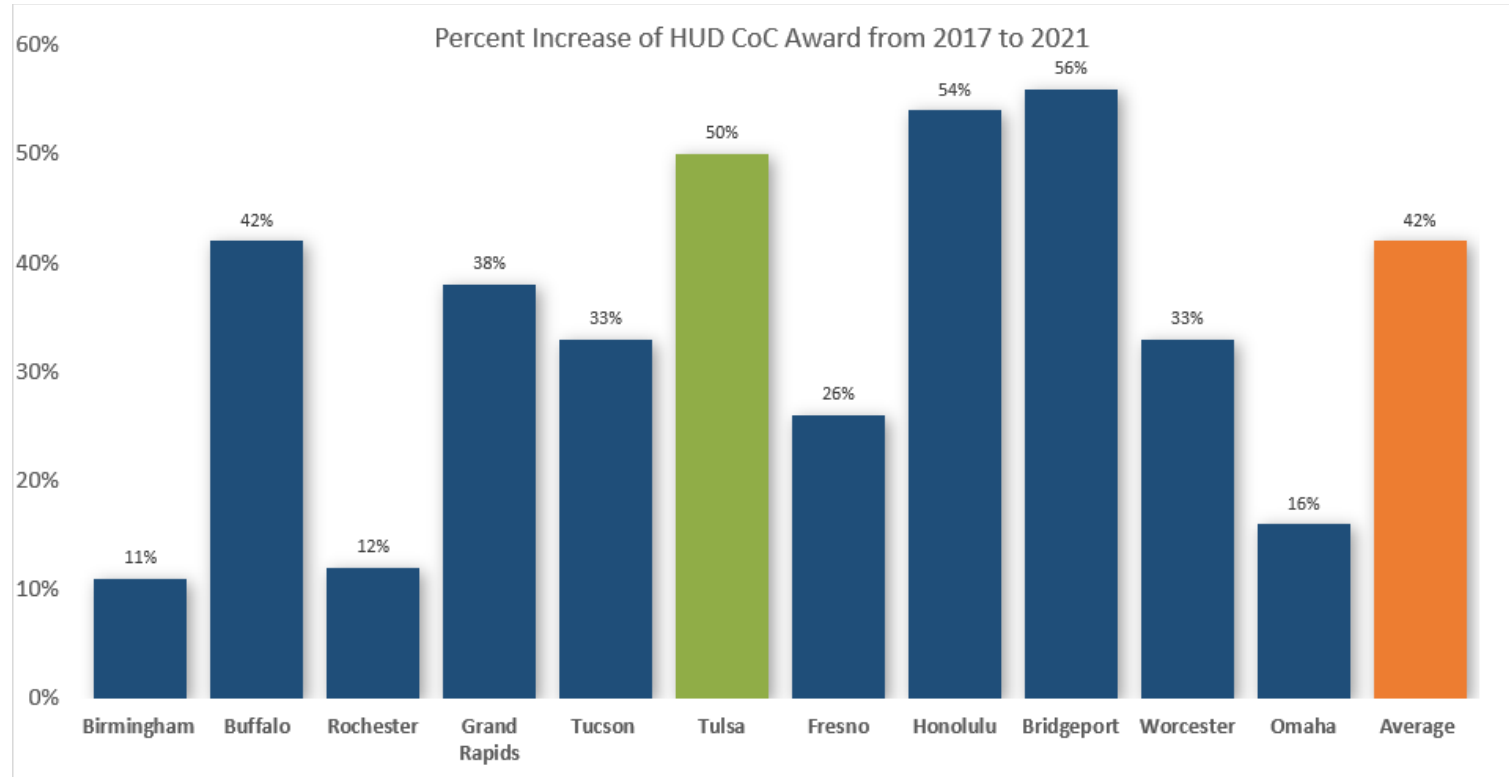
- Rare
 - The total annual Point-in-Time count of people experiencing homelessness will decrease at least **40%**.
 - The annual Point-in-Time count of people experiencing **unsheltered** homelessness will decrease from 25% of the count to less than 5% of the total count.
- Brief
 - The average length of time of homelessness across the system of care will decrease to **30** days.
- Non-recurring
 - The percentage rate of returns to homelessness within 2 years across the system of care will decrease from 23% to **15%**.
 - The percentage of formerly homeless persons in permanent housing who retain or exit to other permanent housing will maintain at 95% or above.



Comparable Communities



Comparable Communities



Discussion



Presentation: Mental Health Improvement Plan



Zack Stoycoff – Healthy Minds, Executive Director

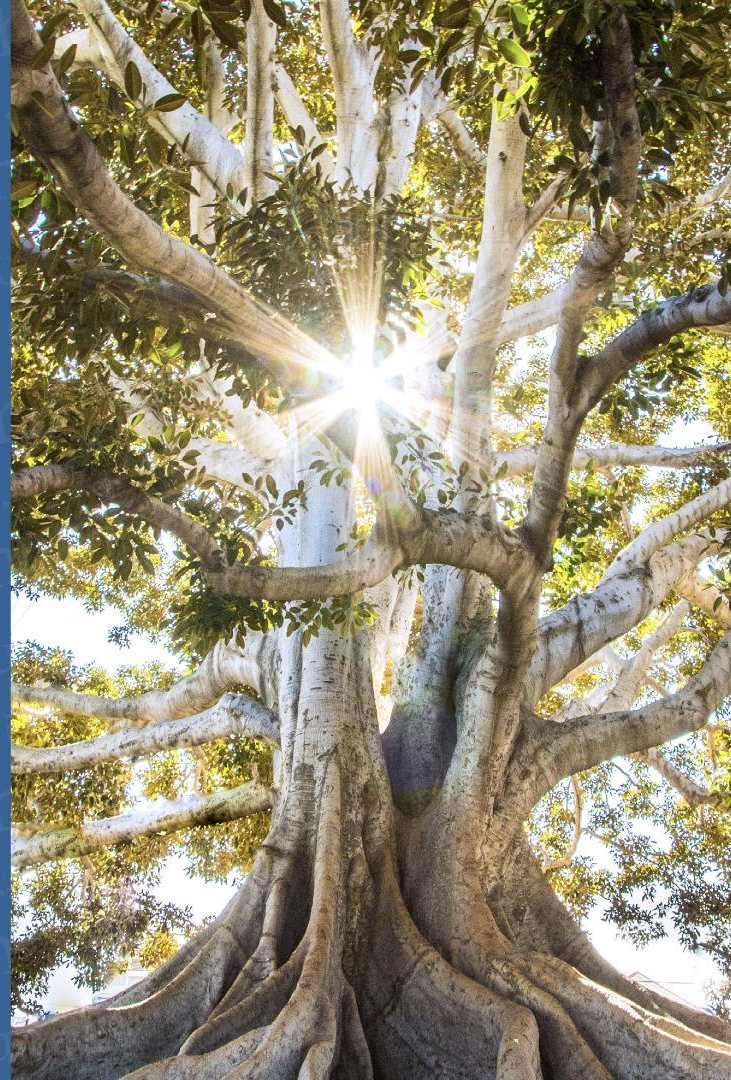


hm. HEALTHY MINDS
POLICY INITIATIVE

healthymindspolicy.org

Zack Stoycoff, executive director

January 25, 2022



Healthy Minds: Who we are

Our mission

We work to end untreated mental illness and addiction in Oklahoma through policy and practice transformation.

Our vision

We believe all Oklahomans should have access to the behavioral health treatment and prevention services they need, when and where they need them.



50+ pieces of original research

Leading Oklahoma's understanding of COVID-19 impact and recovery



Collaborative partnerships

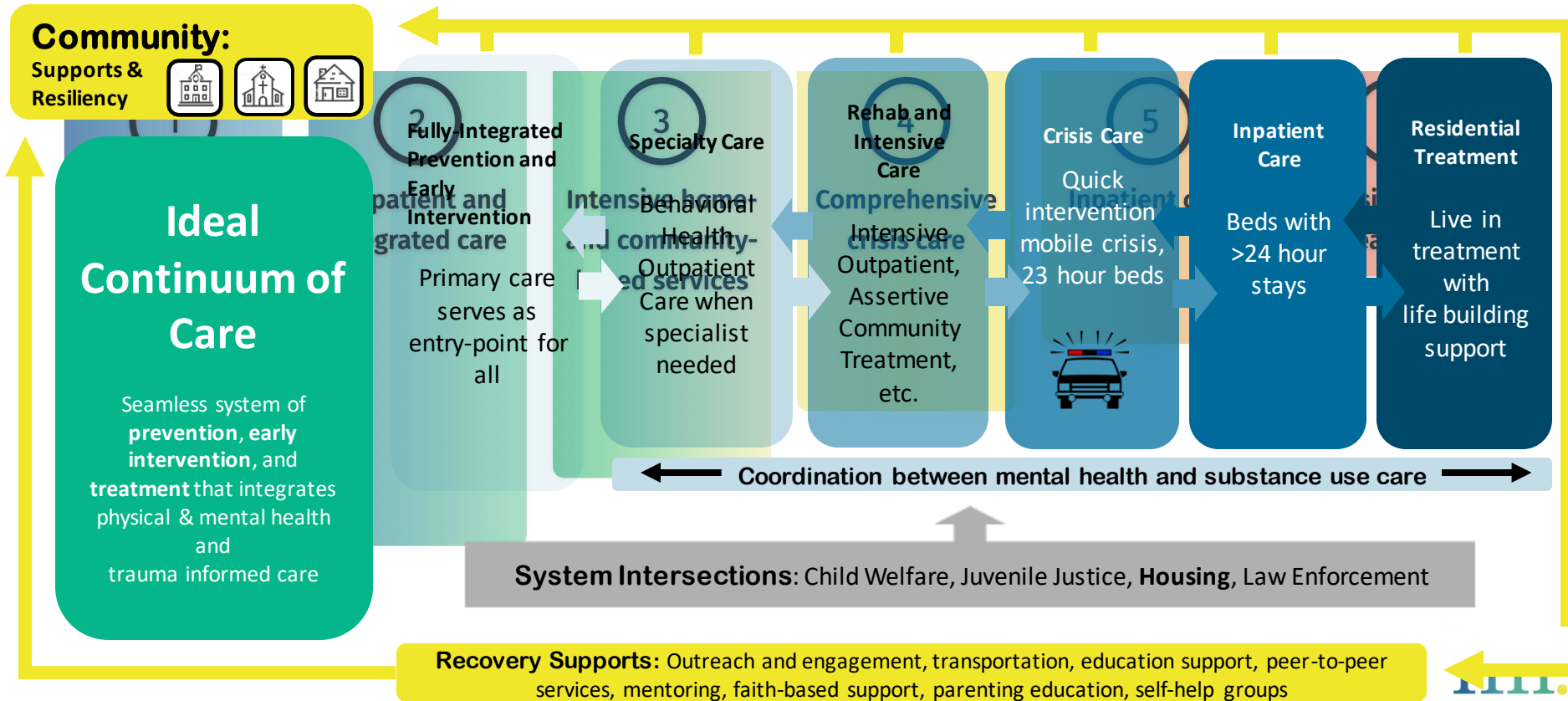
Coalitions of public- and private-sector leaders to elevate mental health policy and practices



Federal funding for Tulsa

Millions of dollars in competitive grants for Tulsa's behavioral health system

What we're building: Continuum of care

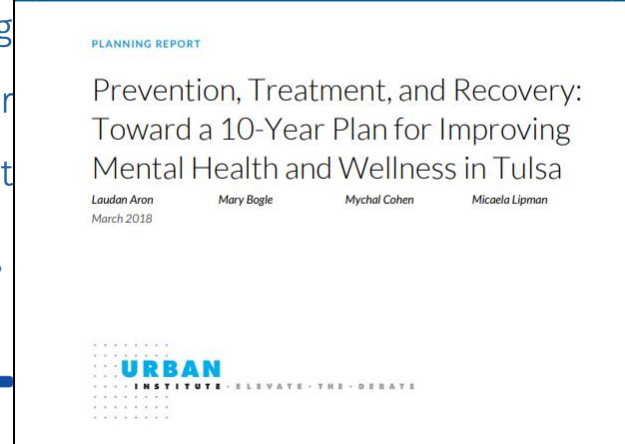


Tulsa 10-year mental health plan: Where we started



wor
Child
Scale
Integ
Diver
Bolst

care



Tulsa 10-year mental health plan: Where we started

Goals and action strategies

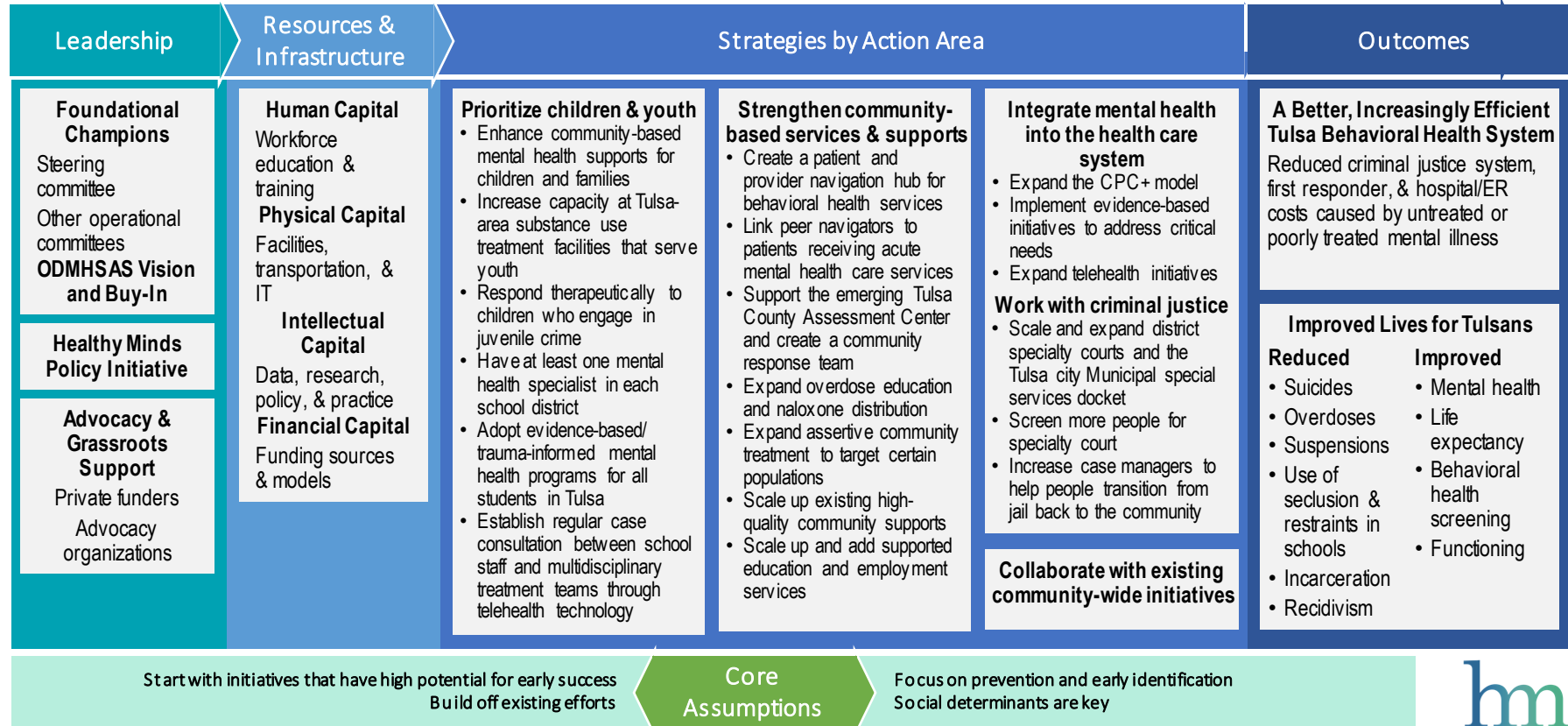
- Reduce life expectancy gap between Tulsans with mental illness and all Tulsans
- Reduce overall rate of suicide and overdose deaths in Tulsa
- Reduce share of Tulsans who experience high levels of poor mental health
- Reduce costs associated with untreated or poorly treated mental illness

By working in these areas:

- Children first
- Scale up programs
- Integrate mental health into general health care
- Diversion from criminal justice systems
- Bolster community initiatives



Tulsa 10-year mental health plan: Where we started



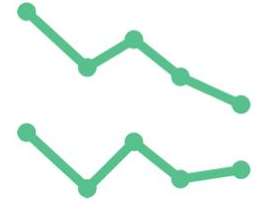
Key priorities for Tulsa



1.) Life-saving pathways for children



2.) Enhancing mental health crisis response



3.) Addressing meth

Key priorities for Tulsa: Life-saving pathways for children



care

Providers deliver outpatient services to a large percentage of children and youth with SED, but the type and intensity of these services do not appear to meet the level of needs for this population.

28,500 Tulsa County children and youth aged 6 to 17 are estimated to have a mental health disorder

 Approximately 8,600 (30%) have serious emotional disturbance (SED)

Tulsa County has few intensive services for children at high risk of hospitalization, leading to inappropriate ER utilization.

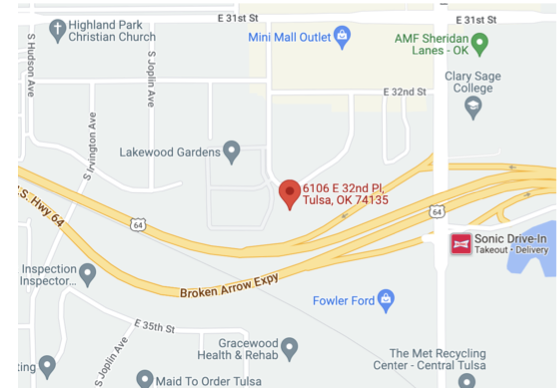
Only 12% of the state's licensed pediatric residential beds are located in Tulsa despite the metro area accounting for 26% of Oklahoma's population aged 6 to 17.

Key priorities for Tulsa: Life-saving pathways for children

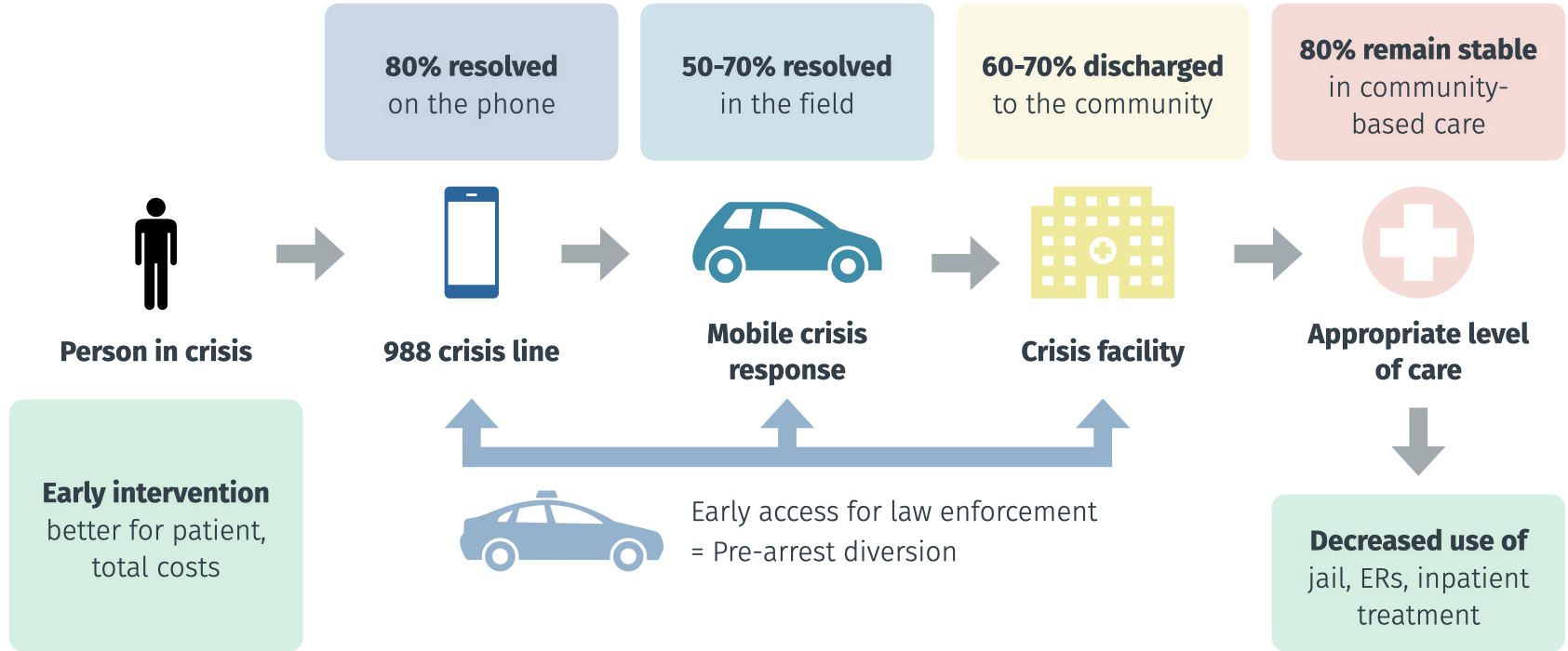
To curb rising youth suicide rates, Counseling and Recovery Services of Oklahoma (CRSOK) requested ARPA funding for a 24/7 urgent recovery center for children's mental health crises.

- **Serving all kids:** Center will accept any child above age 5 in psychiatric distress (regardless of insurance or payer source) and seeks to serve the 1,300 children who otherwise end up in area ERs.
- **Family-centered triage model:** Focus on de-escalating immediate crises, diverting from juvenile justice and local emergency rooms, and connecting families to services.
- **Well-vetted:** Result of a year-long planning process with Healthy Minds Policy Initiative, ODMHSAS, Saint Francis Health System, and law enforcement.

Counseling & Recovery 
SERVICES OF OKLAHOMA 
Certified Sanctuary Community



Key priorities for Tulsa: Enhancing mental health crisis response



Key priorities for Tulsa: Enhancing mental health crisis response

What we have

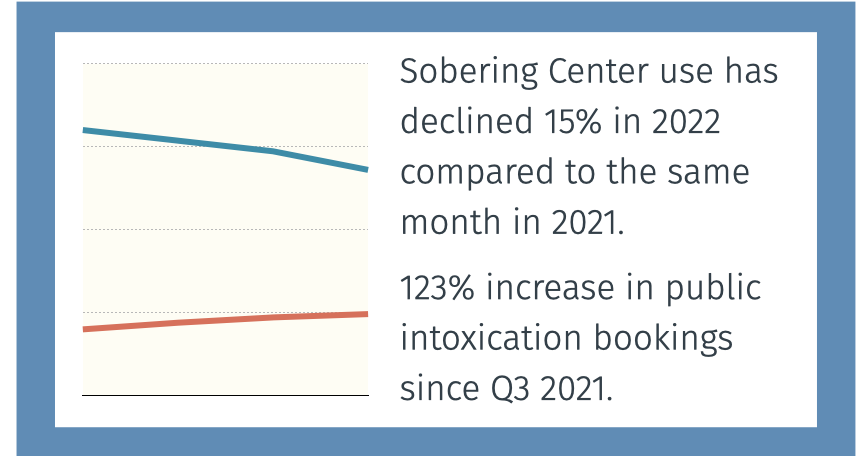
- 24/7 crisis receiving center
- Co-responder model (CRT), Tulsa Fire Department CARES program, mobile response (COPES)
- Transportation alternative to law enforcement
- Additional beds forthcoming at new Tulsa Center for Behavioral Health



Key priorities for Tulsa: Enhancing mental health crisis response

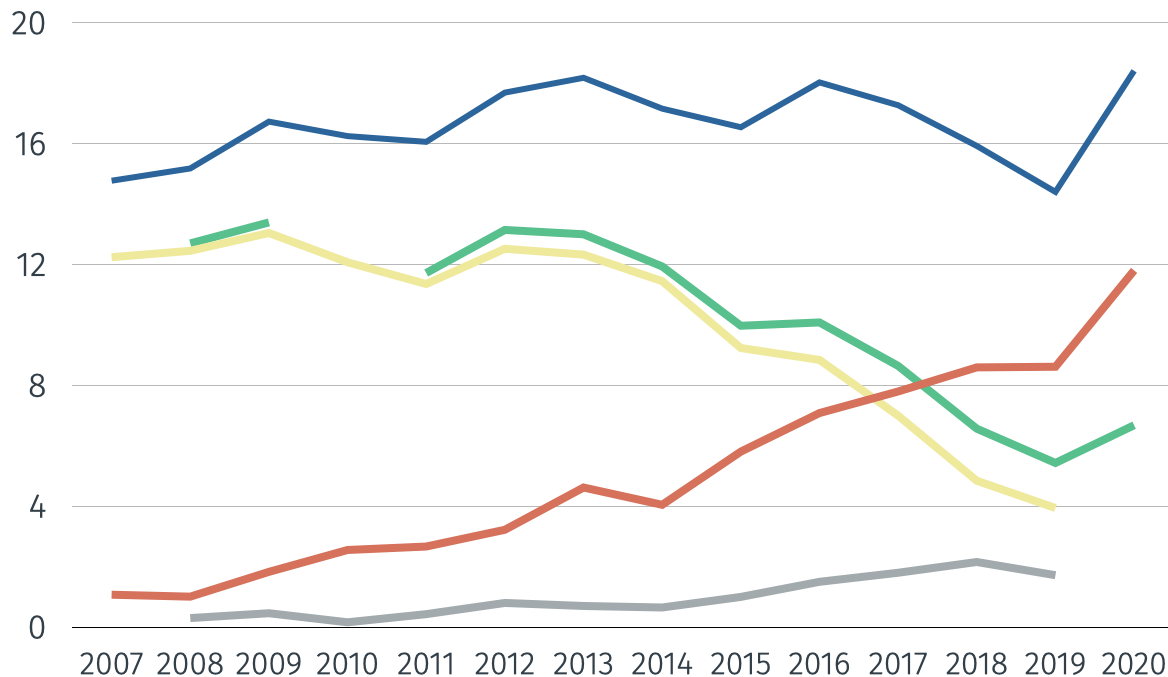
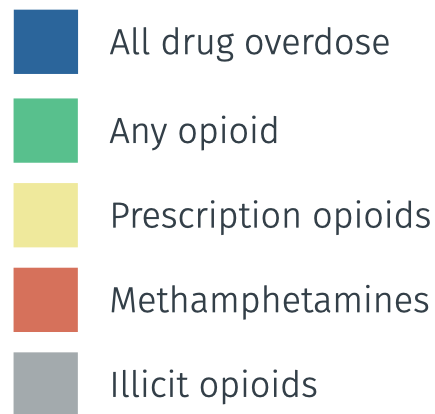
What's still needed

- Better first responder coordination
- Role of 988 in Tulsa's system
- Increased diversion from the criminal justice system
- Better ability to respond before a crisis



Key priorities for Tulsa: Addressing meth

Unintentional poisoning deaths in Oklahoma per 100,000 people



Key priorities for Tulsa: Addressing meth

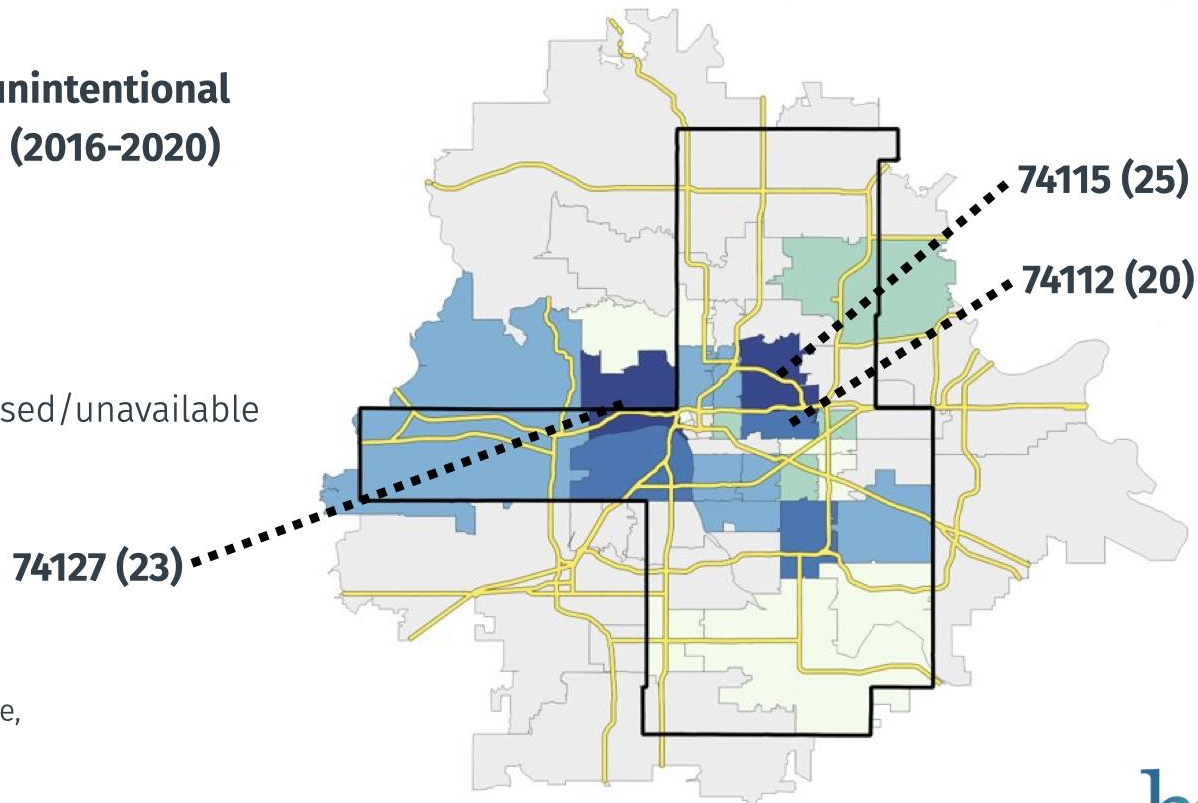
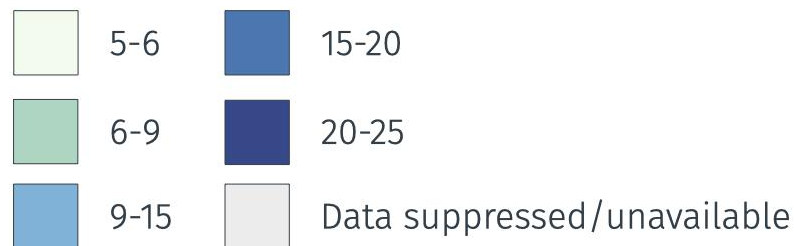


Continuum objectives

Phase 1	Implement a comprehensive, gender-appropriate treatment continuum for methamphetamine use disorder at GRAND Addiction Recovery Center	Intensive detox beds (4)
		Inpatient residential (16 men, 16 women)
		Intensive outpatient program using Matrix model
		Transitional living, sober living, permanent supported housing
		Individualized case management with transportation
		Routine outpatient
Phase 2	Integrate overdose prevention practices in strategic Tulsa settings	Emergency department peer education, medications for opioid use initiation, naloxone distribution, treatment referral, follow-up
		Universal harm reduction education and services among treatment providers
		Community-based harm reduction services
Phase 2	Scale up nationally recognized best practices for reducing meth use in Tulsa	Assess continuum of stimulant prevention, early intervention, and treatment services in Tulsa
		Increase utilization of evidence-based modalities, i.e., contingency management, peer-delivered interventions, Life Skills training

Where do overdoses occur in Tulsa County?

Methamphetamine-related unintentional overdose deaths by zip code (2016-2020)



Source: OSDH, Injury Prevention Service,
Fatal Unintentional Poisoning System

Zero Overdose framework

Foundational belief

Overdose deaths for individuals under the care of health and behavioral health systems are preventable.

Lead, Train, Identify, Engage, Treat, Transition, and Improve

- Lead system-wide change committed to reducing overdoses
- Train a competent, confident, and caring workforce
- Identify individuals at risk for overdose
- Engage all individuals at risk of overdose using a harm reduction safety plan
- Treat overdose risk using evidence-based practices
- Transition individuals through care with warm hand-offs and supportive contacts
- Improve policies and procedures through continuous quality improvement

Adapting safety plans

hm. HEALTHY MINDS
POLICY INITIATIVE

healthymindspolicy.org

@okhealthyminds



Discussion



Key takeaways?

